



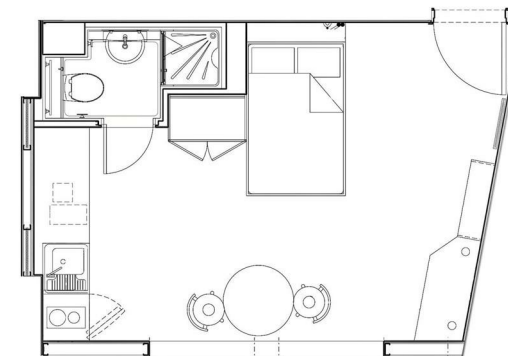
Great Crosshall Street | | Liverpool | L3 2AT

£207 Per week



Great Crosshall Street |  
 Liverpool | L3 2AT  
 £207 Per week

LIVERPOOL | STUDENT | SEPTEMBER



- Social and study spaces
- Bike storage
- High speed Wi-Fi
- Utilities including water and heating
- Strong community
- 24-hour gym
- Onsite laundry facilities
- Contents insurance
- Excellent location
- Student only

Energy Efficiency Rating		Current	Potential
<i>Very energy efficient - lower running costs</i>			
(92 plus) <b>A</b>			
(81-91) <b>B</b>			
(69-80) <b>C</b>			
(55-68) <b>D</b>			
(39-54) <b>E</b>			
(21-38) <b>F</b>			
(1-20) <b>G</b>			
<i>Not energy efficient - higher running costs</i>			
<b>England &amp; Wales</b>	EU Directive 2002/91/EC		

Lower Ground Floor  
 27 Ridley Place  
 Newcastle upon Tyne  
 Tyne and Wear  
 NE1 8JN  
 0191 6403450  
 info@propertybynest.co.uk